



INTERCONTINENTAL®
HOTELS & RESORTS

Welcome to
Frankfurt

CONTENTS

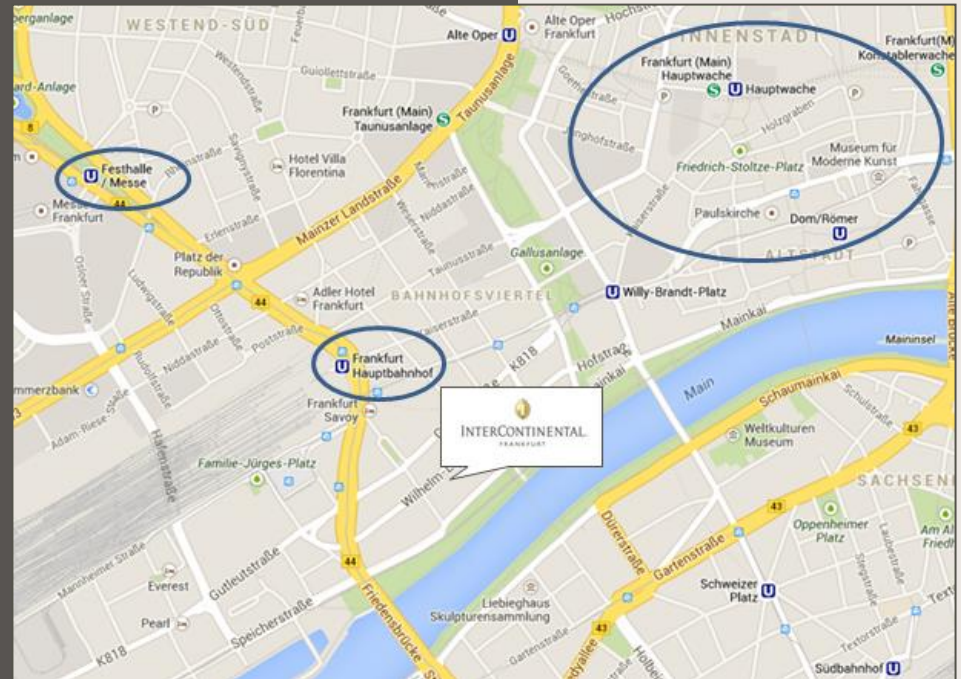
- Location
- Hotel Facts
- Rooms
- Meeting Rooms
- Meetings and Events Collection
- Signatures Veranda Restaurant
- DAXx Mainhattan's Bar
- Catering's Best by InterContinental®
- Certificates
- IHG® Rewards Club & Business Rewards

An aerial photograph of a city skyline, likely San Francisco, featuring several prominent skyscrapers. A dark, semi-transparent horizontal band is overlaid across the middle of the image, containing the word "LOCATION" in a light-colored, serif font. The sky is blue with scattered white clouds, and the foreground shows a dense urban area with various buildings and rooftops.

LOCATION

LOCATION

- Centrally located on the banks of the river Main
- Museum embankment across the river
- 5 min walking from the central station
- 10 min walking from shopping
- 20 min from Frankfurt Airport
- One subway stop from the Frankfurt Trade Fair



MAP



HOTEL FACTS

HOTEL FACTS

- 467 guest rooms
- 19 meeting rooms on two floors
- Restaurant & Bar

Free of charge for hotel guests:

- Free basic internet in all areas
- 24 – hour Room Service
- 24 – hour gym
- Jogging station



JOGGING STATION

An aerial photograph of a city skyline. The background features several prominent modern skyscrapers with glass facades, including a tall, thin tower on the right. The foreground is filled with a dense cluster of older, multi-story buildings with varied architectural styles, including some with red brick and others with white facades. The sky is a clear, bright blue with scattered, wispy white clouds. A dark, semi-transparent horizontal band is overlaid across the middle of the image, containing the text 'ROOM TYPES' in a light-colored, serif font.

ROOM TYPES

ROOM TYPES

STANDARD ROOM

- 26 m²
- Located on the 4th to 15th floor
- City or Skyline View
- Double or Twin Bed
- Flat-Screen TV
- Tea and coffee making facilities
- Minibar
- Safety box



STANDARD ROOM

ROOM TYPES

SUPERIOR ROOM & SUPERIOR RIVER VIEW

- 26 m²
- Located on
 - the higher floors with skyline view or
 - on the lower floors with river view
- Flat-Screen TV
- Double or Twin bed
- Tea and coffee making facilities
- Minibar
- Safety box



SUPERIOR ROOM

ROOM TYPES

DELUXE ROOM

- 35 - 41 m²
- River or Skyline View
- Double or Twin Bed
- Connecting rooms available
- Flat - Screen TV
- Generously designed working area
- Smoking rooms available upon request
- Extra bed upon request



DELUXE ROOM

ROOM TYPES

PANORAMA SUITE

- 68 m²
- River and Skyline View
- Double or Twin bed
- Bedroom and Living Room
- Each room has their own bathroom
- 2 separate entrances
- Flat - Screen TV
- Smoking rooms available
- Extra bed upon request



PANORAMA SUITE

ROOM TYPES

CLUB STUDIO

- 35 - 41 m²
- Located on the 19th & 20th floor
- River or Skyline View
- Double or Twin Bed
- Generous desk, separate seating area
- Flat - Screen TV
- Coffee machine
- Walk-in shower and bathtub
- Extra bed upon request
- Wheel-chair accessible



CLUB STUDIO

ROOM TYPES

CLUB SUITE

- 70 m²
- Located on the 19th & 20th floor
- River or Skyline View
- King Bed or Twin Bed
- Bedroom and living room
- 2 Flat - Screen TVs
- Coffee machine
- Generous desk, separate seating area in the living room
- Walk-in shower and bathtub
- Extra bed upon request
- Wheel-chair accessible



CLUB SUITE

ROOM TYPES

PRESIDENTIAL SUITE

- 160 m²
- River and Skyline View
- 2 King - Sized Beds
- 2 bedrooms, 2 bathrooms,
1 living room
- 2 Walk - in showers, large bathtub
- Dining and working area
- Flat - Screen TV in each room
- Coffee machine
- Club lounge access included



PRESIDENTIAL SUITE

An aerial photograph of a city skyline, likely New York City, featuring several prominent skyscrapers. A dark, semi-transparent horizontal band is overlaid across the middle of the image, containing the text "CLUB LOUNGE" in a light-colored, serif font. The sky is blue with scattered white clouds, and the foreground shows a dense urban landscape with various buildings and rooftops.

CLUB LOUNGE

CLUB LOUNGE

- Located on the 21st floor
- Open from 6.30 am to 10.00 pm
- Serves continental breakfast, lunch, dinner as well as drinks throughout the day
- Balcony overlooking the river Main
- Daily newspapers and magazines



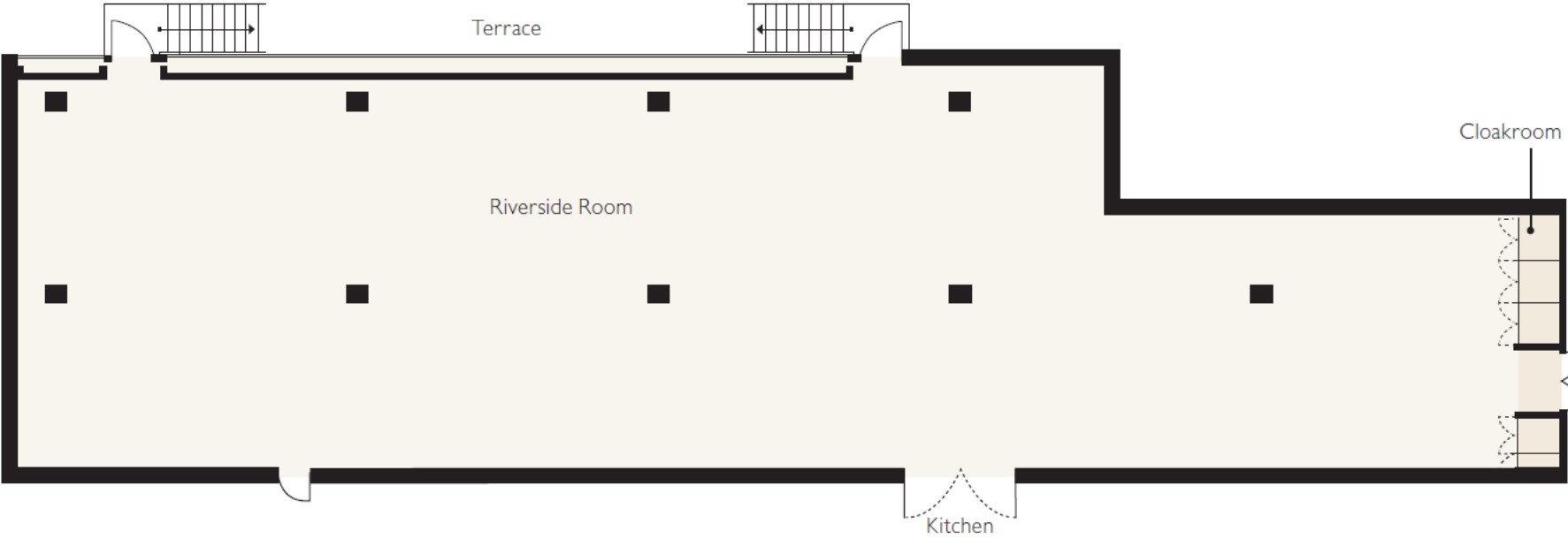
CLUB LOUNGE

An aerial photograph of a city skyline. The foreground shows a dense cluster of multi-story buildings with varied architectural styles, including some with flat roofs and others with more traditional gabled roofs. In the background, a prominent skyline of modern skyscrapers rises against a blue sky with wispy white clouds. The skyscrapers vary in height and design, with some featuring glass facades and others with more solid, metallic-looking exteriors. A dark, semi-transparent horizontal band is overlaid across the middle of the image, containing the text 'MEETING ROOMS' in a light-colored, serif font.

MEETING ROOMS

GROUND FLOOR

GROUND FLOOR



FLOOR PLAN – GROUND FLOOR

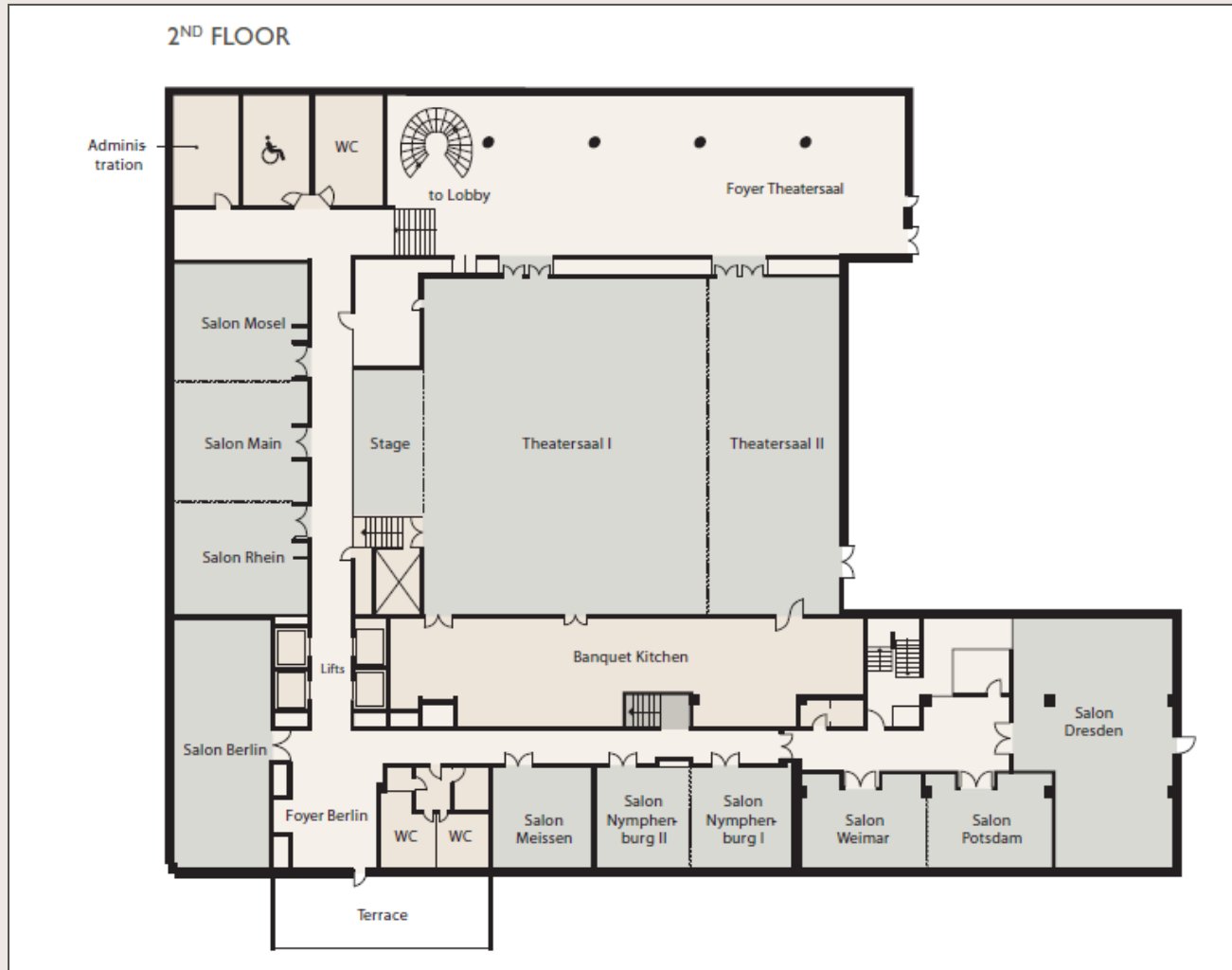
RIVERSIDE

- 376 m²
- Terrace (240 m²) for up to 130 people facing to the river
- Space for up to 250 delegates seated
- The adjoining banquet kitchen makes it ideal for a dinner



RIVERSIDE

2nd FLOOR



FLOOR PLAN 2nd FLOOR

BALLROOM

- 605 m²
- Foyer 365 m²
- Possibility to divide the room in two
 - Ballroom I: 396 m²
 - Ballroom II: 206 m²
- No daylight but multifunctional light system
- Separate entrance next to the official entrance possible



BALLROOM

RHEIN - MAIN - MOSEL

- 181 m²
- Possibility to divided the room in 3
 - Rhein: 58 m²
 - Main: 62 m²
 - Mosel: 59 m²
- Daylight - flooded



RHEIN – MAIN – MOSEL

BERLIN

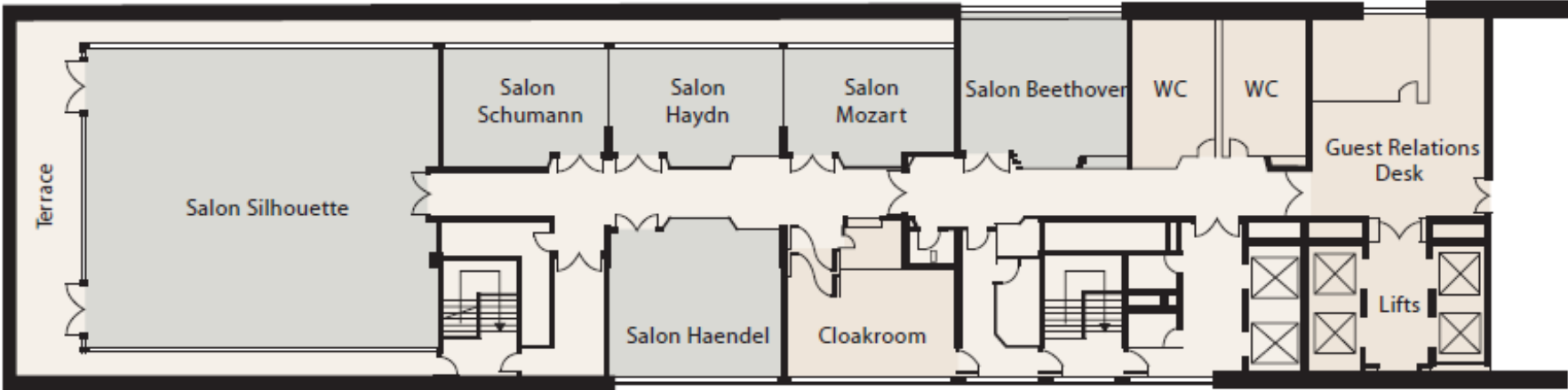
- 98 m²
- Own foyer (43 m²)
- Floor to ceiling windows on two sides of the room



BERLIN

21st FLOOR

21ST FLOOR



FLOOR PLAN - 21st FLOOR

BEETHOVEN

- 42 m²
- View to the river
- Floor to ceiling windows



BEETHOVEN

SILHOUETTE

- 180 m²
- 360° view to skyline and river
- Floor to ceiling windows



SILHOUETTE

- <https://www.frankfurt.intercontinental.com/video/webcam>

An aerial photograph of a city skyline. The foreground shows a dense cluster of multi-story buildings with varied architectural styles, including some with flat roofs and others with more traditional gabled roofs. In the background, a prominent skyline of modern skyscrapers rises against a bright blue sky with wispy white clouds. The lighting suggests a clear day, possibly in the late afternoon or early morning, given the long shadows and the warm tones of the buildings.

MEETINGS & EVENTS COLLECTION

MEETINGS & EVENTS COLLECTION

MEETINGS & EVENTS COLLECTION:

BASE PACKAGE



Complimentary high speed internet access

Complimentary bedrooms

Upgrade to a Panorama Suite for a delegate of your choice

Complimentary drinks reception

OPTIONS (CHOOSE 2 OF THE FOLLOWING 4)



Special attrition allowance

1 in 10 attendees goes free

Complimentary airport transfer to hotel for a delegate of your choice

Complimentary Club InterContinental® access for a delegate of your choice

IHG® BUSINESS REWARDS



Join IHG® Business Rewards and earn rewards by booking travel on behalf of others.

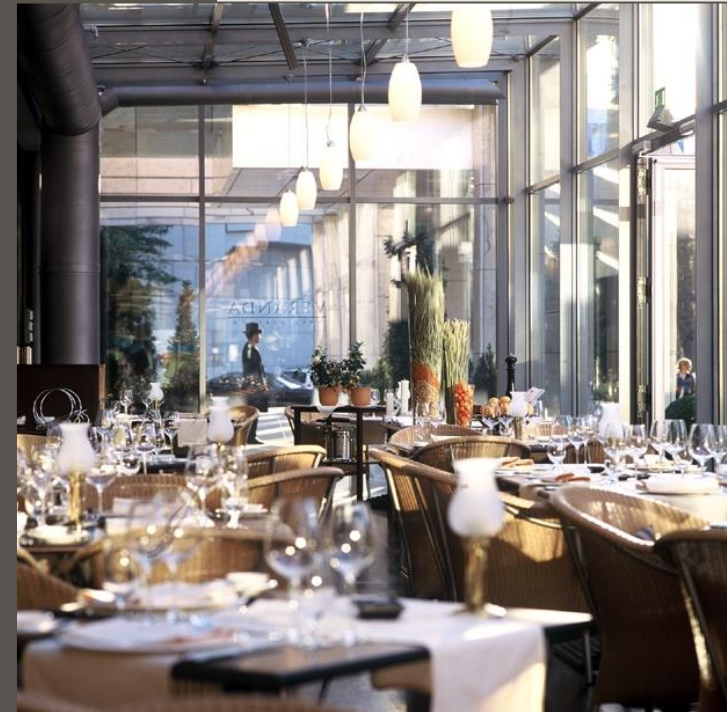
Earn 3 points per \$1USD.

An aerial photograph of a city skyline, likely San Francisco, featuring a mix of modern glass skyscrapers and older, more traditional buildings. The sky is blue with scattered white clouds. A dark, semi-transparent horizontal band is overlaid across the middle of the image, containing the text 'SIGNATURES VERANDA RESTAURANT' in a gold, serif font. The foreground shows a dense urban area with various building styles and rooftops.

SIGNATURES VERANDA
RESTAURANT

SINATURES VERANDA RESTAURANT

- Space for 170 guests
- Opening Times
 - Mo. – Fr. 6.30 am – 10.30 am
 - Sa. – Sun. 6.30 am – 11.00 am
 - Mo. – Sun. 12.00 pm – 3.00 pm
 - Mo. – Sun. 5.30 pm – 10.30 pm
- Steak Market every Thursday
- German and international cuisine
- Own in-house patisserie and in-house butcher
- Offering early-bird-breakfast



SIGNATURES

An aerial photograph of a city skyline, likely New York City, featuring several prominent skyscrapers. The sky is blue with scattered white clouds. A dark, semi-transparent horizontal band is overlaid across the middle of the image, containing the text 'DAXx MANHATTAN'S BAR' in a gold, serif font. The foreground shows a dense urban area with various buildings, including some with flat roofs and others with more traditional architectural styles.

DAXx MANHATTAN'S BAR

DAXx MANHATTAN's BAR

- Mo. – Sun. 10 am – 1 am
- 60 different sorts of Whisky
- Different cocktails and regional snacks



DAXx MANHATTAN's BAR

An aerial photograph of a city skyline, likely New York City, featuring several prominent skyscrapers. The sky is blue with light, wispy clouds. A dark, semi-transparent horizontal band is overlaid across the middle of the image, containing the text 'CATERING'S BEST BY INTERCONTINENTAL®' in a gold, serif font. Below the dark band, the lower part of the image shows a dense urban area with various buildings, including some with flat roofs and others with more traditional architectural styles.

CATERING'S BEST BY
INTERCONTINENTAL®

CATERING'S BEST BY INTERCONTINENTAL®

- Catering in national and international locations
- Multiple exciting locations in and around Frankfurt
- Kosher and vegan events possible
- All equipment from one hand
- Food and ice carving artist
- Individual decoration



CATERING'S BEST

THE AIRCRAFT

- 212 m²
- Upon 316 guests
- 20 KM from hotel
- Have the feeling of a first class passenger



AIRCRAFT

LUFTHANSA FLIGHT TRAINING CENTER

- 2500 m²
- Upon 400 guests (seated)
- 14 KM from hotel
- Airplane simulators surrounding your event and create a special atmosphere up



LFTC

SENCKENBERG MUSEUM

- Two rooms with 1150 m²
- Upon 500 guests (seated)
- 3 KM from hotel
- Skeletons of dinosaurs are classy illuminated in the air



SENCKENBERG MUSEUM

An aerial photograph of a city skyline, likely New York City, featuring several prominent skyscrapers. A dark, semi-transparent horizontal band is overlaid across the middle of the image, containing the word "CERTIFICATES" in a gold, serif font. The foreground shows a dense urban area with various buildings, including some with flat roofs and others with more traditional architectural styles. The sky is blue with scattered white clouds.

CERTIFICATES

CERTIFICATES



An aerial photograph of a city skyline, likely New York City, featuring several prominent skyscrapers. The image is overlaid with a dark, semi-transparent horizontal band across the middle. The text 'IHG REWARDS CLUB' is centered within this band in a light-colored, serif font. The sky is blue with scattered white clouds, and the foreground shows a dense urban landscape with various buildings and rooftops.

IHG REWARDS CLUB



CLUB-MEMBERSHIP

- Extended Check-Out time till 2 p.m. (upon request and subject to availability)
- Newspapers on weekdays
- Standard Internet free of charge
- IHG Rewards Club Concierge

GOLD-MEMBERSHIP

- All benefits of Club-Membership
- PLUS
- Priority Check-In for guaranteed reservations
 - 10% point bonus on basis points

PLATINUM-MEMBERSHIP

- All benefits of Club-Membership
- PLUS
- Priority Check-In for guaranteed reservations
 - 50% point bonus on basis points
 - Room upgrade free of charge
 - Guaranteed room availability (for reservations made 72 hours in advance)

SPIRE ELITE-MEMBERSHIP

- All benefits of Club-Membership
- PLUS
- Priority Check-In for guaranteed reservations
 - 100% point bonus on basis points
 - Room upgrade free of charge
 - Guaranteed room availability (for reservations made 72 hours in advance)



An aerial photograph of a city skyline, likely New York City, featuring several prominent skyscrapers. The sky is blue with scattered white clouds. A dark, semi-transparent horizontal band is overlaid across the middle of the image, containing the text 'IHG BUSINESS REWARDS' in a gold, serif font. Below the band, the dense urban landscape of the city is visible, with various buildings and rooftops.

IHG BUSINESS REWARDS

IHG® BUSINESS REWARDS

NO EVENT IS TOO SMALL NOT TO BE REWARDED.

Are you a professional event planner, booker or travel manager? Do you plan private events such as weddings, birthdays or family festivities? Then IHG® Business Rewards is just the right thing for you!

Your benefits at one glance:

- ✓ Various attractive rewards (Reward Nights, gift cards, donations to charity, etc.)
- ✓ No booking threshold and no minimum qualifying spend
- ✓ 3 points for every \$ 1 USD spent
- ✓ Complimentary internet access
- ✓ Priority access to exclusive member offers

After enrolling, you automatically become a member of the IHG® Rewards Club, you only have one account, one membership number and one common point score:

IHG® Business Rewards: *Points for booking meetings and private events, including hotel rooms, meeting rooms as well as food and beverage*

IHG® Rewards Club: *Points for personal stays*





INTERCONTINENTAL®
HOTELS & RESORTS

THANK YOU!

INTERCONTINENTAL® FRANKFURT

Wilhelm-Leuschner-Straße 43, 60329 Frankfurt am Main, Germany
Tel: +49 (0) 69 2605 0 Fax: +49 (0) 69 2524 67
frankfurt@ihg.com www.frankfurt.intercontinental.com

 InterContinentalFrankfurt

 ICFrankfurt